



9 R A J G I R

BORIVALI

FEEL  
AT HOME,  
AT WORK!



Images are for representation purpose only

# WORK SPACES THAT MAKE YOU FEEL AT HOME



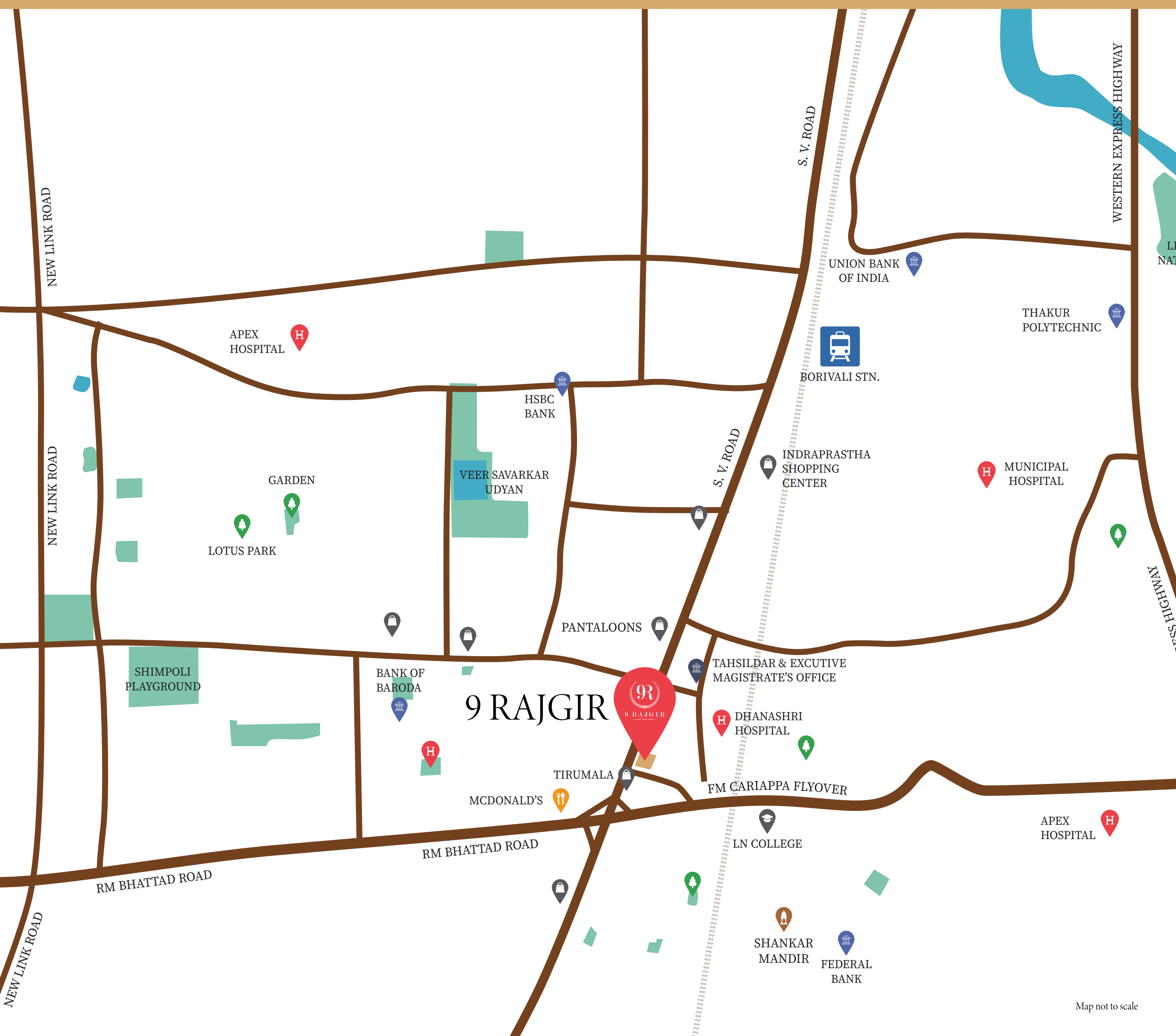
Grade-A office spaces that take care of your well-being with excellent ventilation & sunlight, optimum comfort and stunning aesthetics.



# A LOCATION THAT'S YOUR 2<sup>ND</sup> HOME

With all your emotions and relations invested in Borivali, we brought your office closer to your home, so that you never come back home, tired.

Add to it close proximity to the Western Expressway, Borivali Station, Link Road and BY Road.







Images are for representation purpose only

# THE WISE INVESTMENT



Commercial spaces have witnessed an exponential growth of more than 200% in Borivali in past 8 years, making it the new desirable business destination of Mumbai.



# INTERNATIONAL TOUCH OF CLASS



The contemporary glass façade and vertical fins outside the parking floors give the structure an International look.







Images are for representation purpose only

# BOUTIQUE OFFICES AND RETAIL SPACES

— ❖ ❖ ❖ —

The 348 to 4500 Sq.Ft. office boutique spaces comprising of minimum columns enable maximum freedom in internal planning while the retail spaces promise high visibility with the dual road frontage.



# RELAX. REBOOT. IDEATE.



A jogging track, a cafeteria, and telescope for sky-gazing, Rooftop is the best place for you to relax and re-energize.







Images are for representation purpose only

# A MAJESTIC ARRIVAL



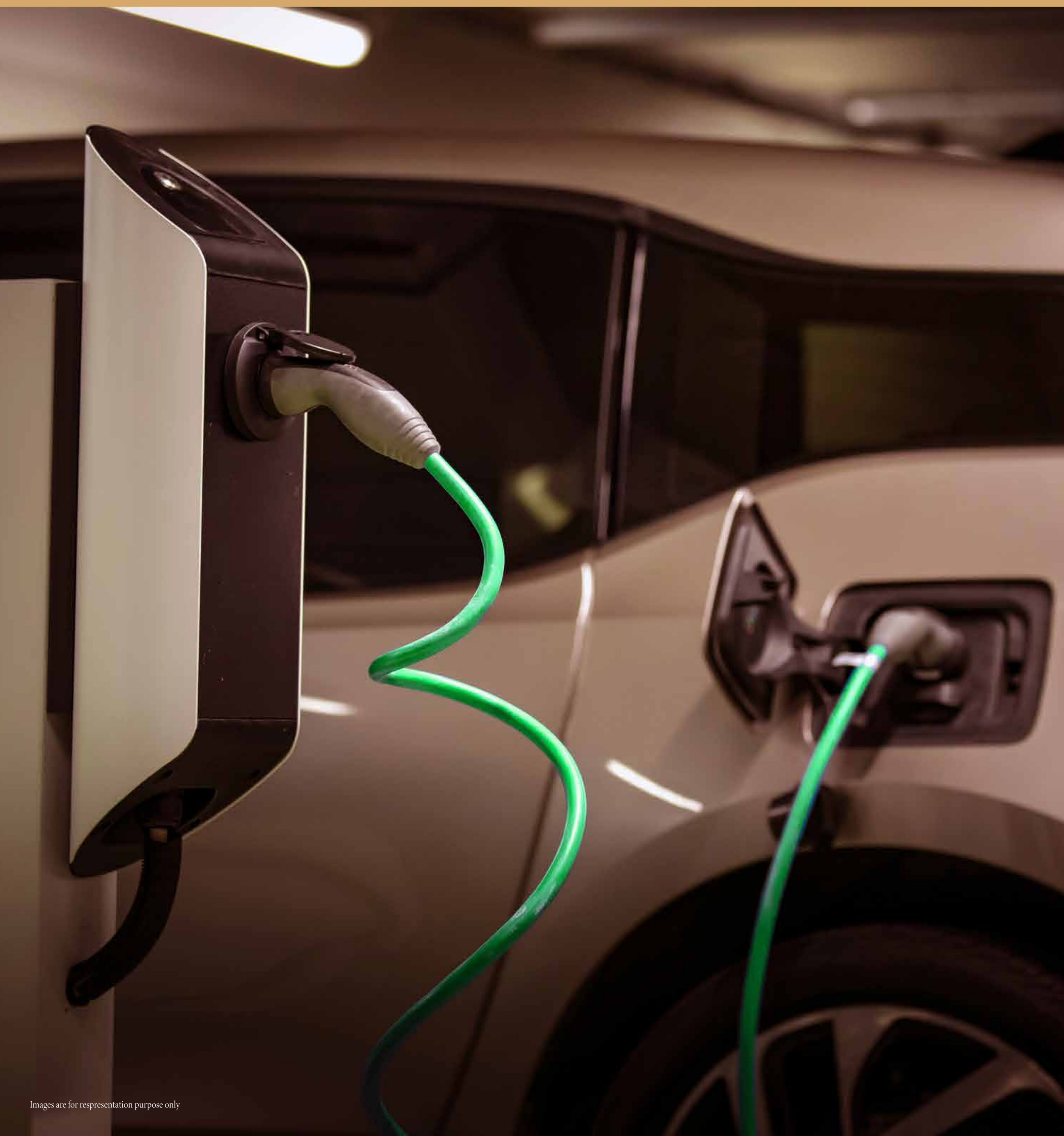
Stately porch with a valet to make for a majestic arrival.



# DRIVING TOWARDS A GREENER TOMORROW



Parking spaces with electric car charging points to encourage everyone to move towards a healthier planet.





Images are for representation purpose only

# FOR YOUR SECURITY & CONVENIENCE



- Fire Alarms
- A robust Visitor Authentication Management System
- A multi-tier security system that includes Fire Alarm, Intercom System & CCTV surveillance
- High-Speed Automatic Lifts



# FUTURISTIC FEATURES TO KEEP YOU MOTIVATED & STRESS-FREE AT WORK

- 24\*7 High-Speed internet connectivity to achieve business milestones at a rapid pace
- Heat-resistant DGU glass façade that reduces energy consumption and keeps you focused







Images are for representation purpose only.

# OPTIMISING ENERGY EFFICIENCY



The heat-resistant glass façade reduces energy consumption and also keeps you focused within a composed environment, away from the chaotic noise of the outer world.



# A PROVEN LEGACY

## A PROVEN LEGACY:

WITH A VISION TO REDEFINE LIFESTYLE ASPIRATIONS, GIRDHARILAL ASUDANI AND RAJENDRA JAIN SET OFF ON A CONCRETE JOURNEY AROUND 4 DECADES AGO. BUILT ON A STRONG FOUNDATION OF INTEGRITY, TRUST AND COMMITMENT, THEY DELIVERED MULTIPLE MEMORABLE PROJECTS ACROSS MUMBAI, THANE & MAHABLESHWAR.

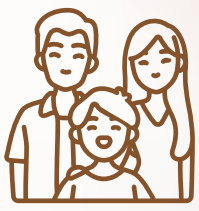
ADDING INNOVATIVE EXPERTISE AND DYNAMISM TO THE GROUP'S VISION, ARE DEEPAK JAIN & JITENDRA ASUDANI - THE NEXT-GEN TORCH-BEARERS. THEY ARE COMMITTED TO PERCOLATE THE SAME LEGACY WITHIN THEIR RESPECTIVE ENTERPRISES BY CREATING NEW-AGE LANDMARKS.



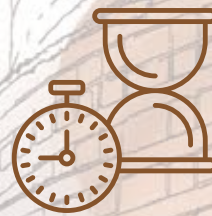
45 YEARS OF  
TRUST AND QUALITY



35 STATE-OF-THE-ART PROJECTS ACROSS MUMBAI,  
THANE & MAHABLESHWAR



PROVEN RECORD  
OF TIMELY DELIVERY



1500+ SMILING  
CUSTOMERS



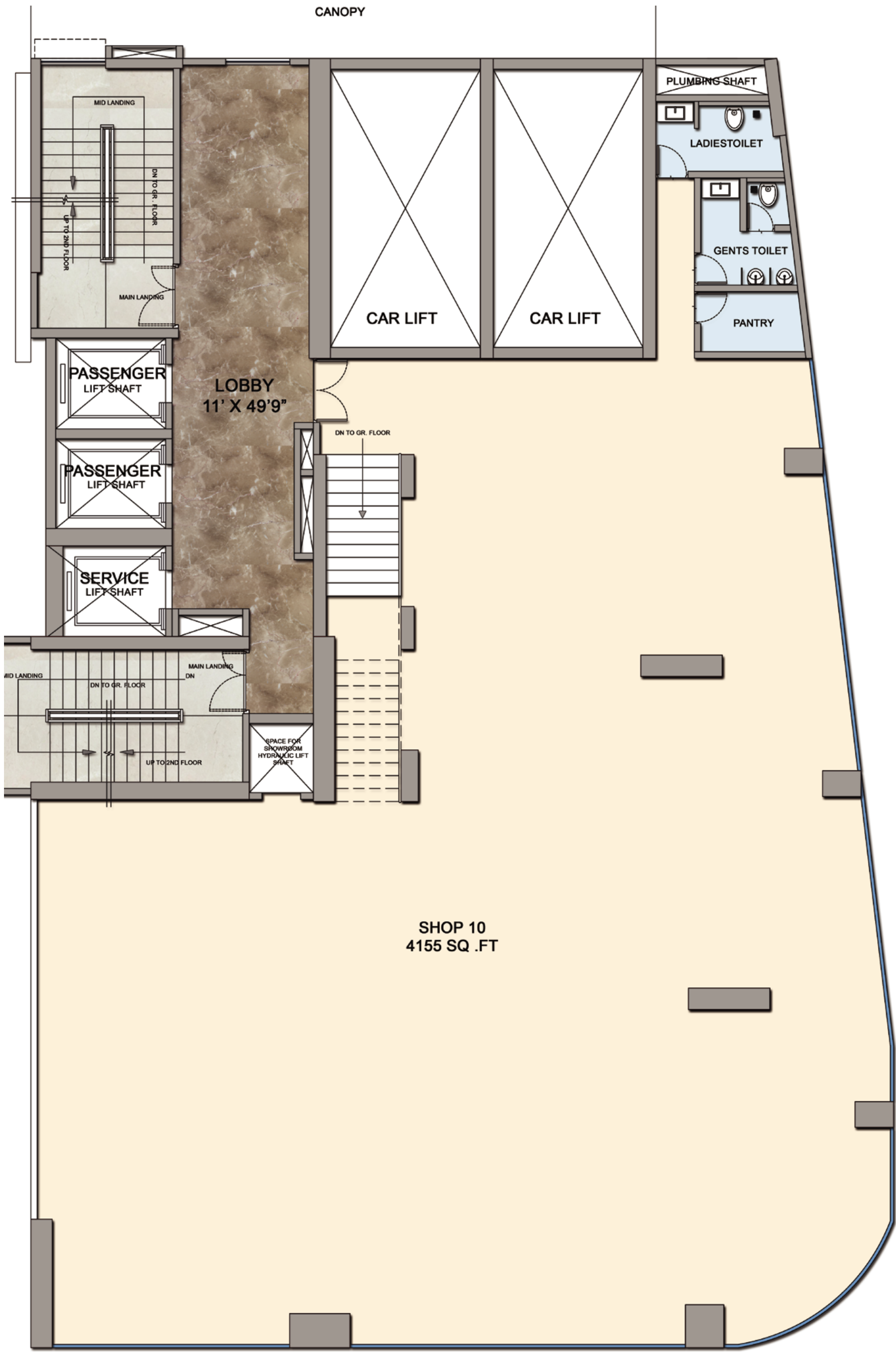
9 RAJGIR  
BORIVALI





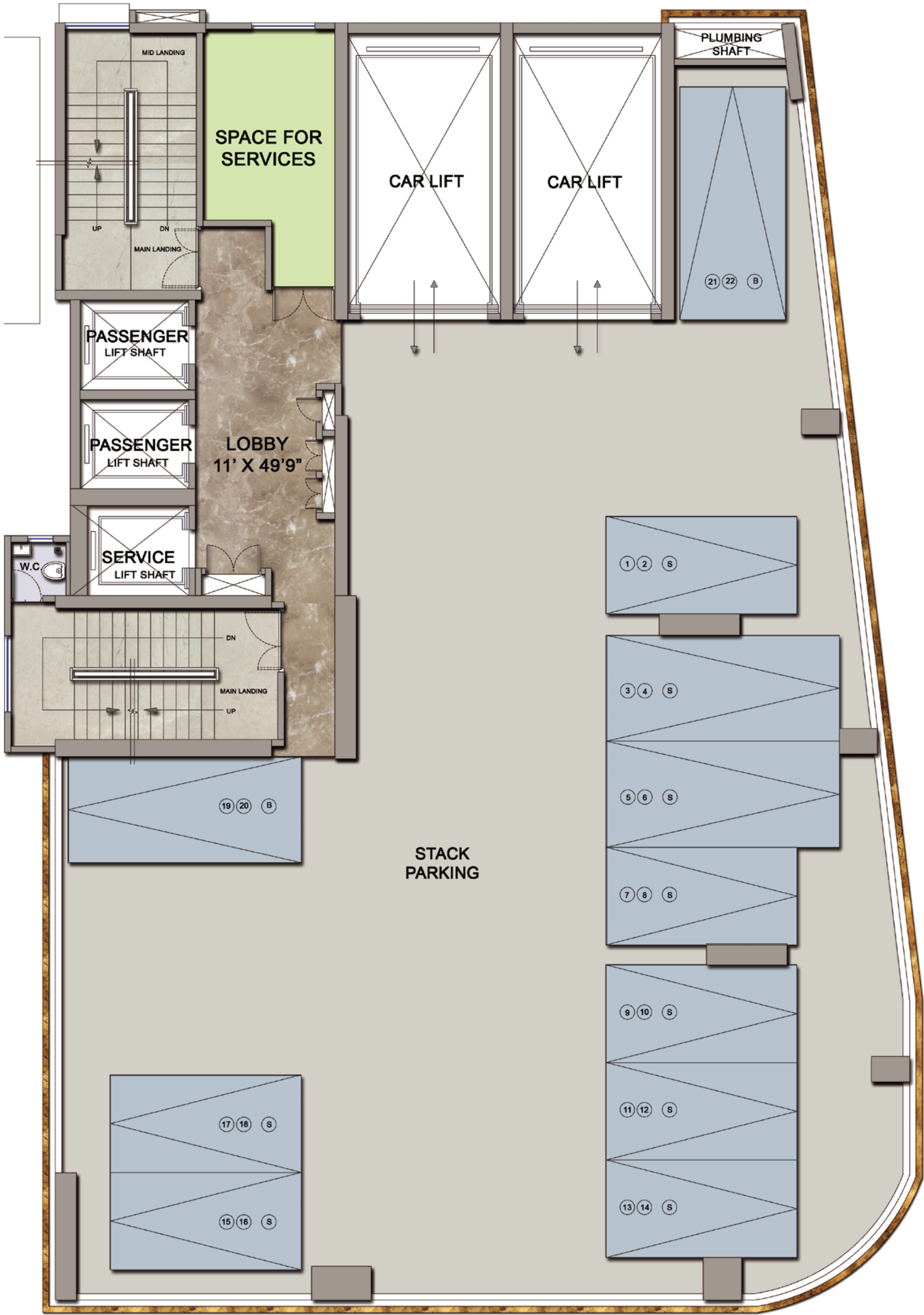
— — — — —  
 GROUND FLOOR  
 — — — — —





— — — — —  
 1<sup>st</sup> FLOOR  
 — — — — —

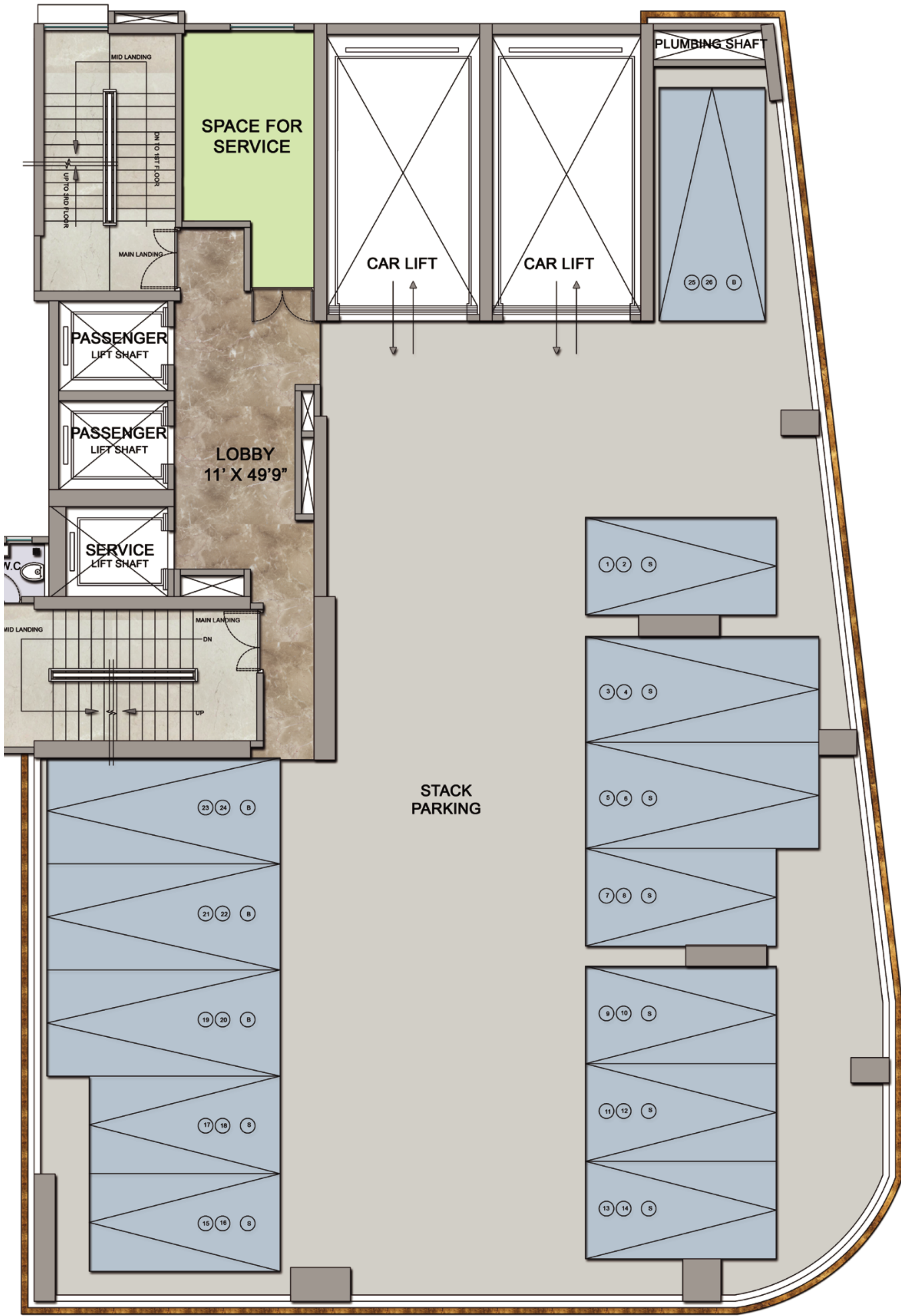




—♦♦—  
**PODIUM FLOOR**  
 —♦♦—

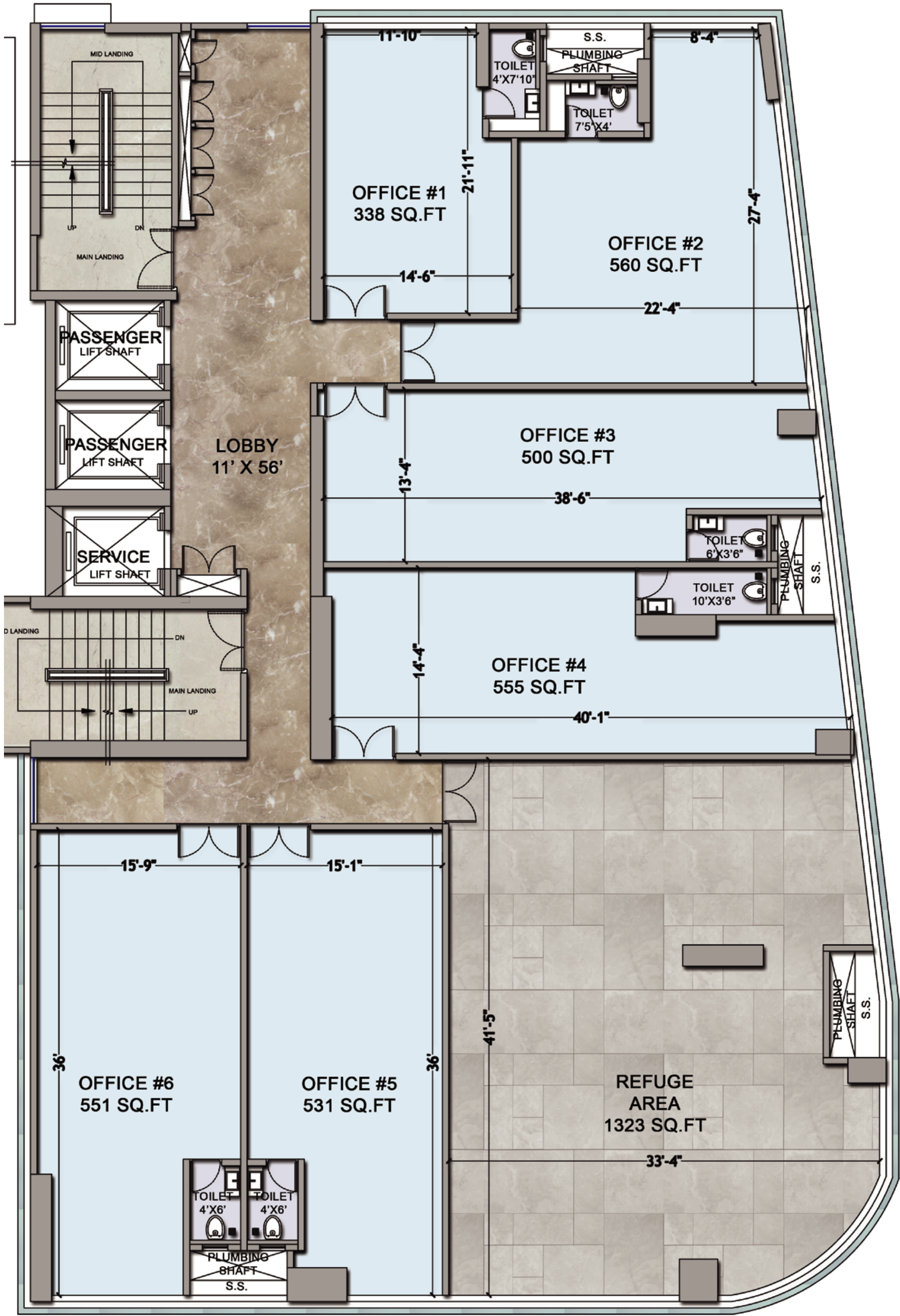
2ND - 4TH FLOORS





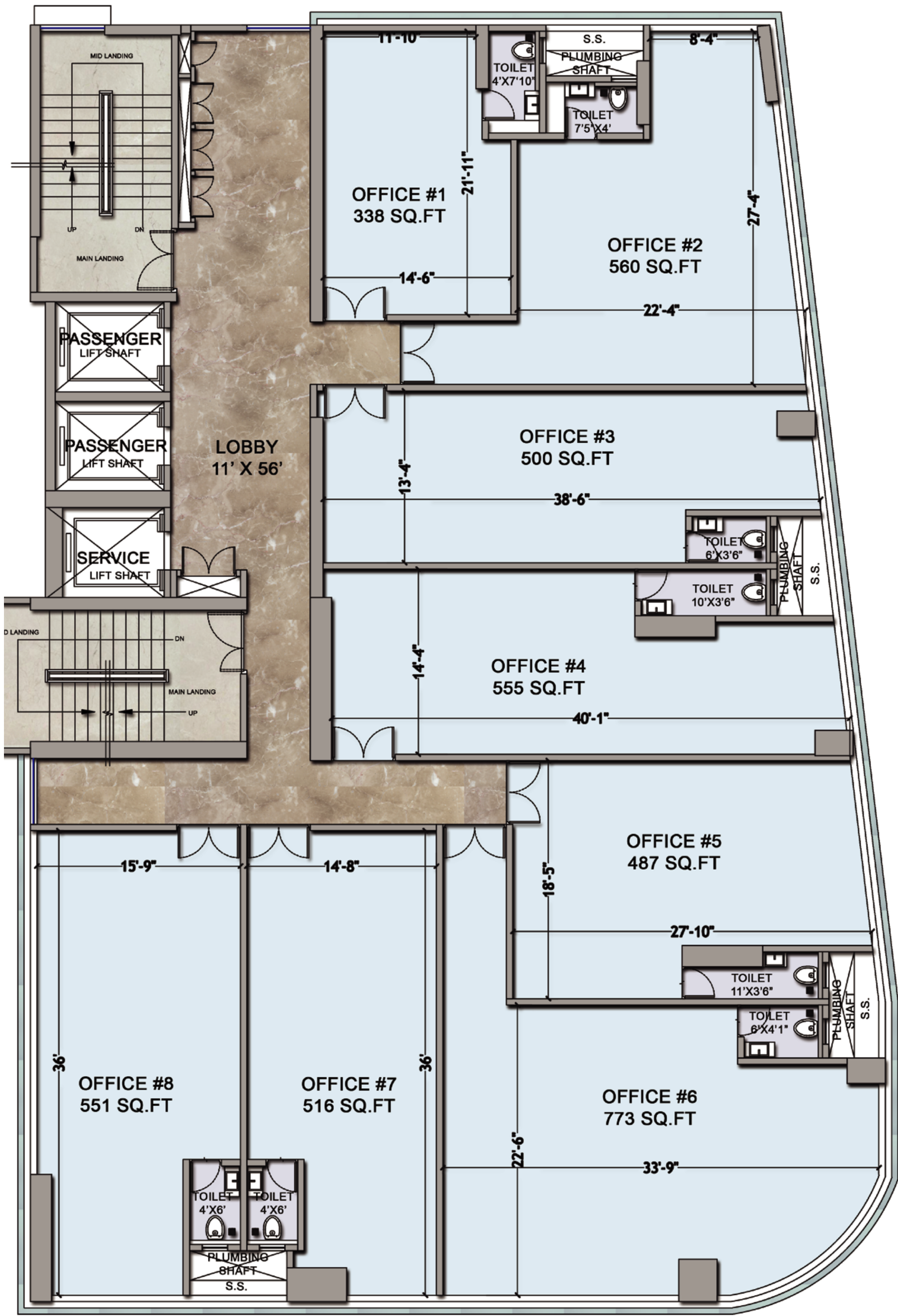
—♦♦—  
**PODIUM 5<sup>th</sup> FLOOR**  
 —♦♦—





6<sup>th</sup> FLOOR

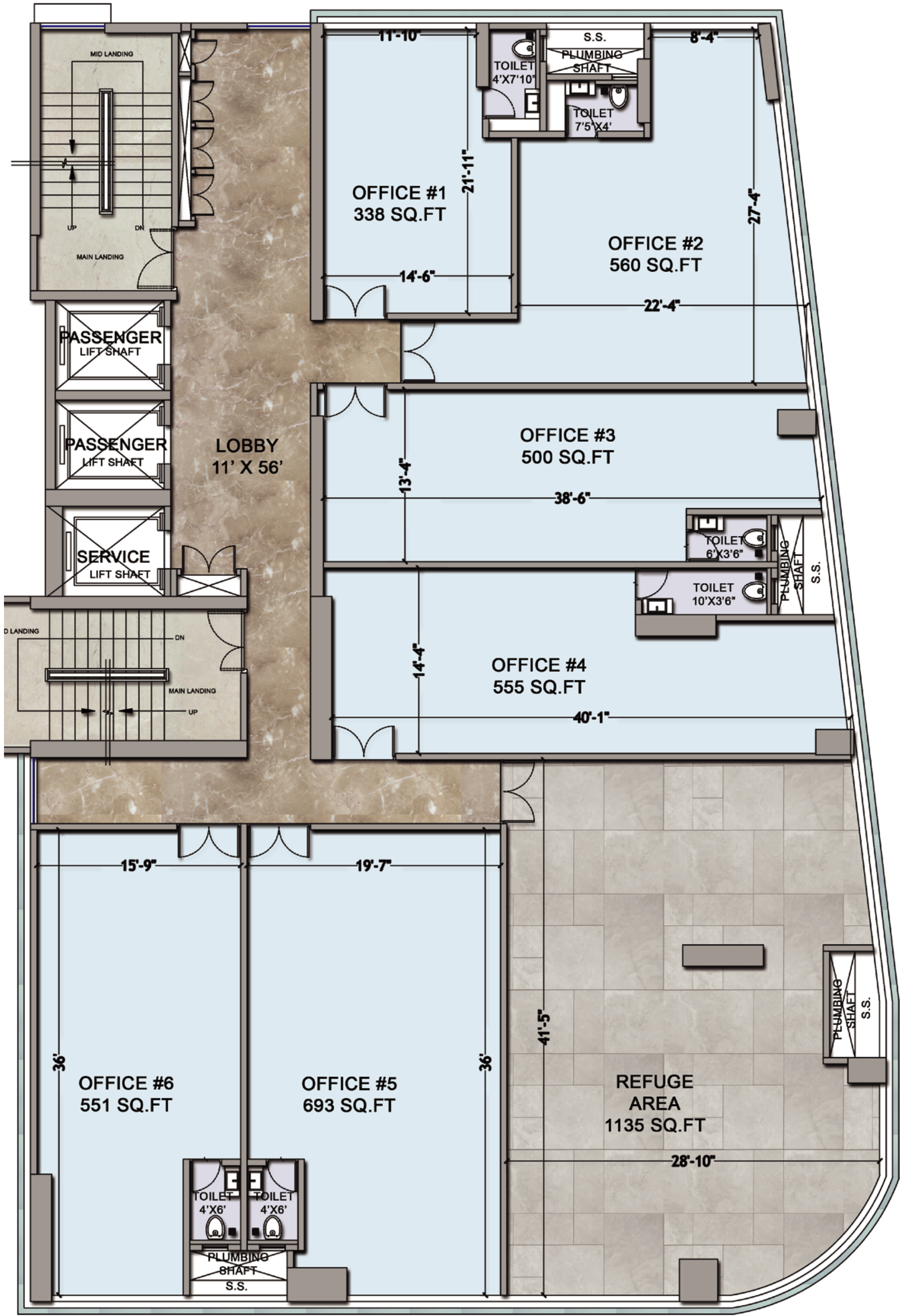




# TYPICAL FLOORS

7TH - 12TH & 14TH TO 18TH FLOORS





— — — — —  
 13<sup>th</sup> FLOOR  
 — — — — —





— — — — —  
**ROOFTOP**  
— — — — —





9 RAJGIR

BORIVALI

**HEAD OFFICE:**

KAVITA CONSTRUCTION COMPANY, 303 SAFFIRE BUILDING, LINKING ROAD, OPP ICICI BANK,  
SANTACRUZ WEST, MUMBAI - 400054

**SITE OFFICE:**

PLOT NO. 766, MAIN S.V. ROAD, DIAGONALLY OPP. MC DONALD'S, BORIVALI WEST, MUMBAI - 400092

**CREDITS:**

PRINCIPAL ARCHITECT - HARISH GANDHI | ASSOCIATE DESIGN ARCHITECT - ARCHITECT RUSHIKESH . H

[www.9rajgir.com](http://www.9rajgir.com)



MahaRera Registration No:  
**P51800029847**  
<https://maharera.mahaonline.gov.in>